

# ASSEMBLY INSTRUCTIONS

## VANITY CABINET (VA1816-D)

(VA2418,VA2421)

(VA3018,VA3021)

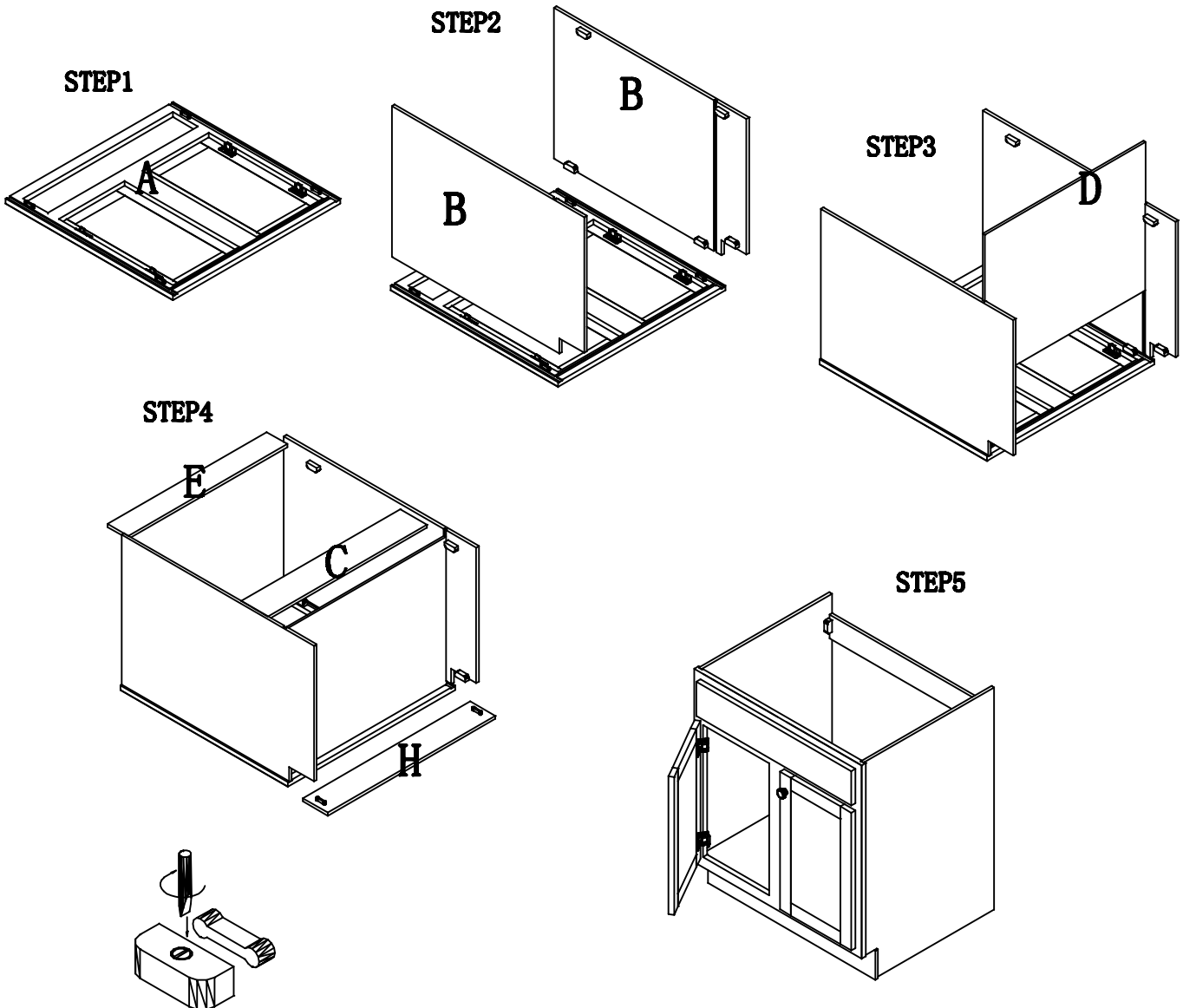
(VA3618,VA3621)

### CABINET PARTS LIST

**A-Doors & Face Frame    B-End Panels(2)    C-Back Bottom Panel    D-Bottom Panel**  
**E-Back Panel    H-Toe Kick**

### HARDWARE PARTS LIST

#### 1. Knob(2)



Your cabinet is complete. For installation, consult a professional contractor or building supplier for the proper installation method or materials to be used for your existing wall condition (e.g., wood, concrete, tile, etc.).