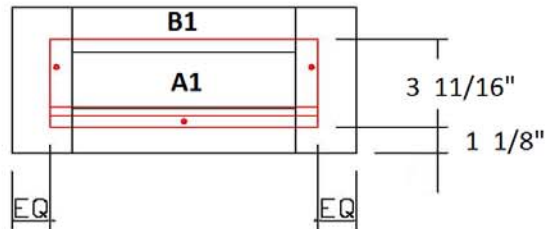


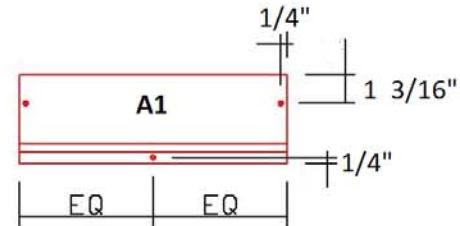
# Savannah Honey / Savannah Merlot Drawer Box Upgrade Instruction

## Small Drawer Upgrade -

Remove the pre-attached plywood drawer box front (A1) off the drawer face (B1). Place the new solid wood drawer box front to the center of the drawer face (B1). Move it until it is 1 1/8" away from the bottom edge of the drawer face (B1).

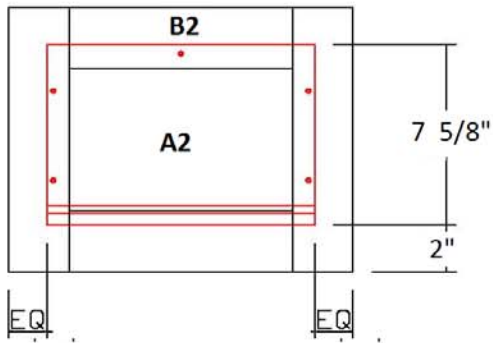


Fix the solid wood drawer box front with 3 screws at the places where the dots are. Assemble the drawer box and mount the soft close glides.



## Large Drawer Upgrade -

Remove the pre-attached plywood drawer box front (A2) off the drawer face (B2). Place the new solid wood drawer box front to the center of the drawer face (B2). Move it until it is 2" away from the bottom edge of the drawer face (B2).



Fix the solid wood drawer box front with 5 screws at the places where the dots are. Assemble the drawer box and mount the soft close glides.

