

ASSEMBLY INSTRUCTIONS

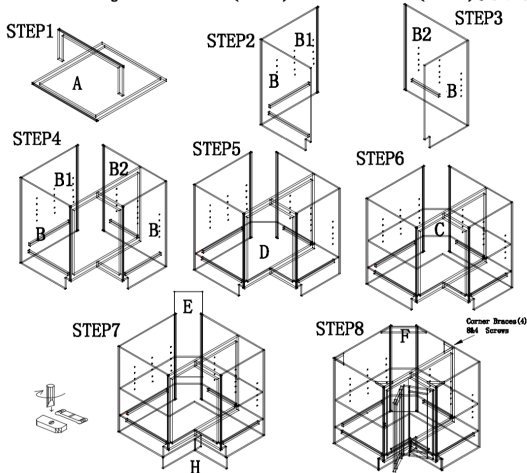
EASY REACH (ER3309)

CABINET PARTS LIST

- A-Largest Face Frame/Smallest Face Frame & Doors B-End Panels(2)
B1-Short End panel B2-long End Panel C-Shelf D-Bottom
E-Back Panel F-Top Back Brace H-Toe Kicks (2)

HARDWARE PARTS LIST

1. Corner Braces(4) 2. Screws($\emptyset 3,5 \times 25-4$) 3. Screws($\emptyset 3 \times 12-8$)
4. Bottom/W Screws($\emptyset 3 \times 20-14$) 5. Toe Kick Screws($\emptyset 3 \times 12-2$)
6. Largest Face Frame Screws($\emptyset 3 \times 12-2$) 7. Back Panel Screws($\emptyset 3 \times 10-2$) 8. Shelf Clips (8)



Your cabinet is complete. For installation, consult a professional contractor or building supplier for the proper installation method or materials to be used for your existing wall condition (e.g., wood, concrete, tile, etc.).