

ASSEMBLY INSTRUCTIONS

VANITY CABINET (VA2418D,VA2421D) (VA3018D,VA3021D)

CABINET PARTS LIST

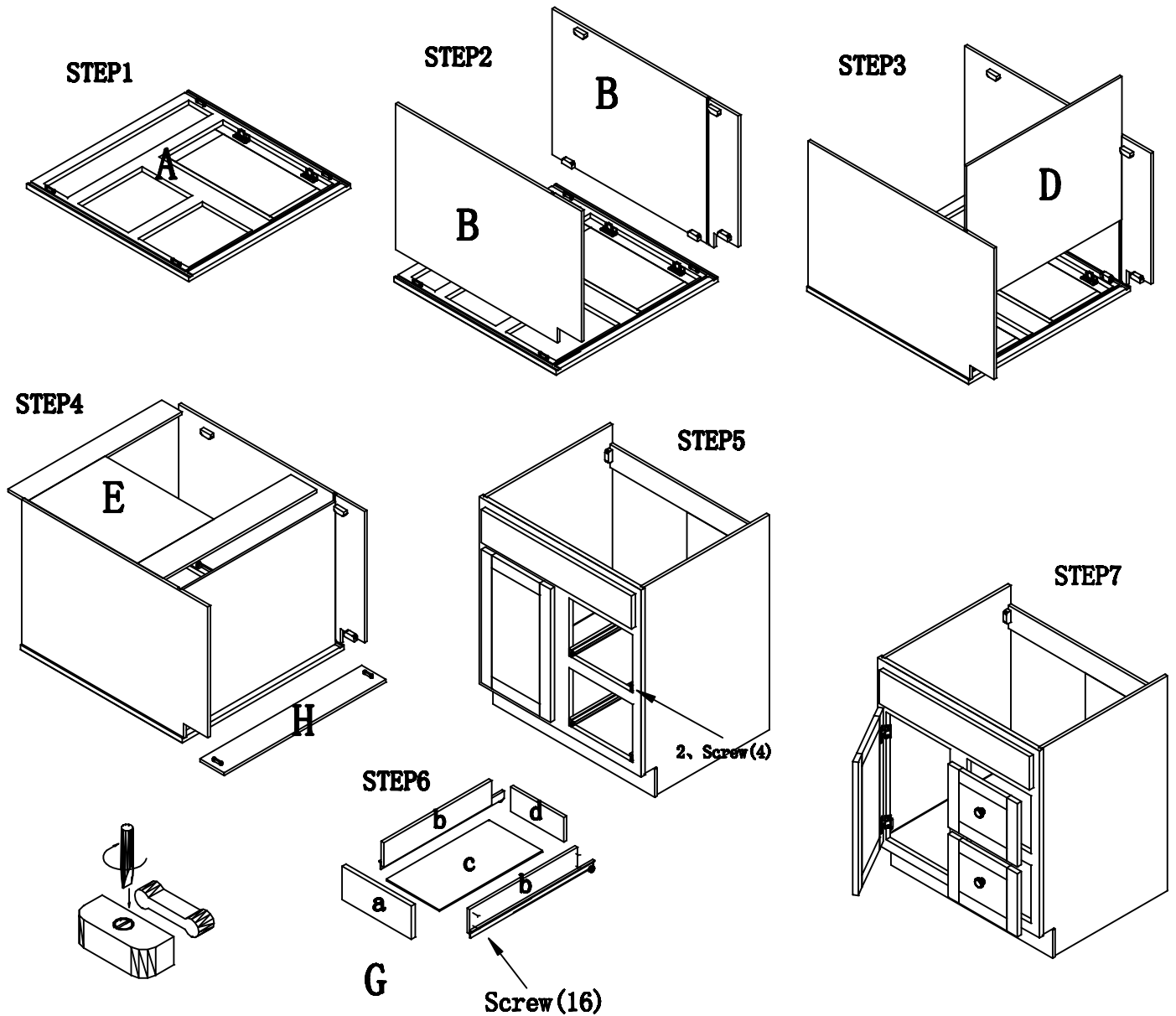
**A-Doors & Face Frame B-End Panels(2) D-Bottom Panel
E-Back Panel H-Toe Kick G-Drawer Parts**

Drawer PARTS LIST

a-Front(2) b-Side(4) c-Bottom(2) d-Back(2) e-Drawer Slide(2 pr) f-Screw(Ø3*30-16)

HARDWARE PARTS LIST

1. Knob(3) 2. Screw(Ø3*10-4)



Your cabinet is complete. For installation, consult a professional contractor or building supplier for the proper installation method or materials to be used for your existing wall condition (e.g., wood, concrete, tile, etc.).