

# ASSEMBLY INSTRUCTIONS

## VANITY CABINET (VA4218D,VA4221D) (VA4818D,VA4821D) (VA6018D,VA6021D)

### CABINET PARTS LIST

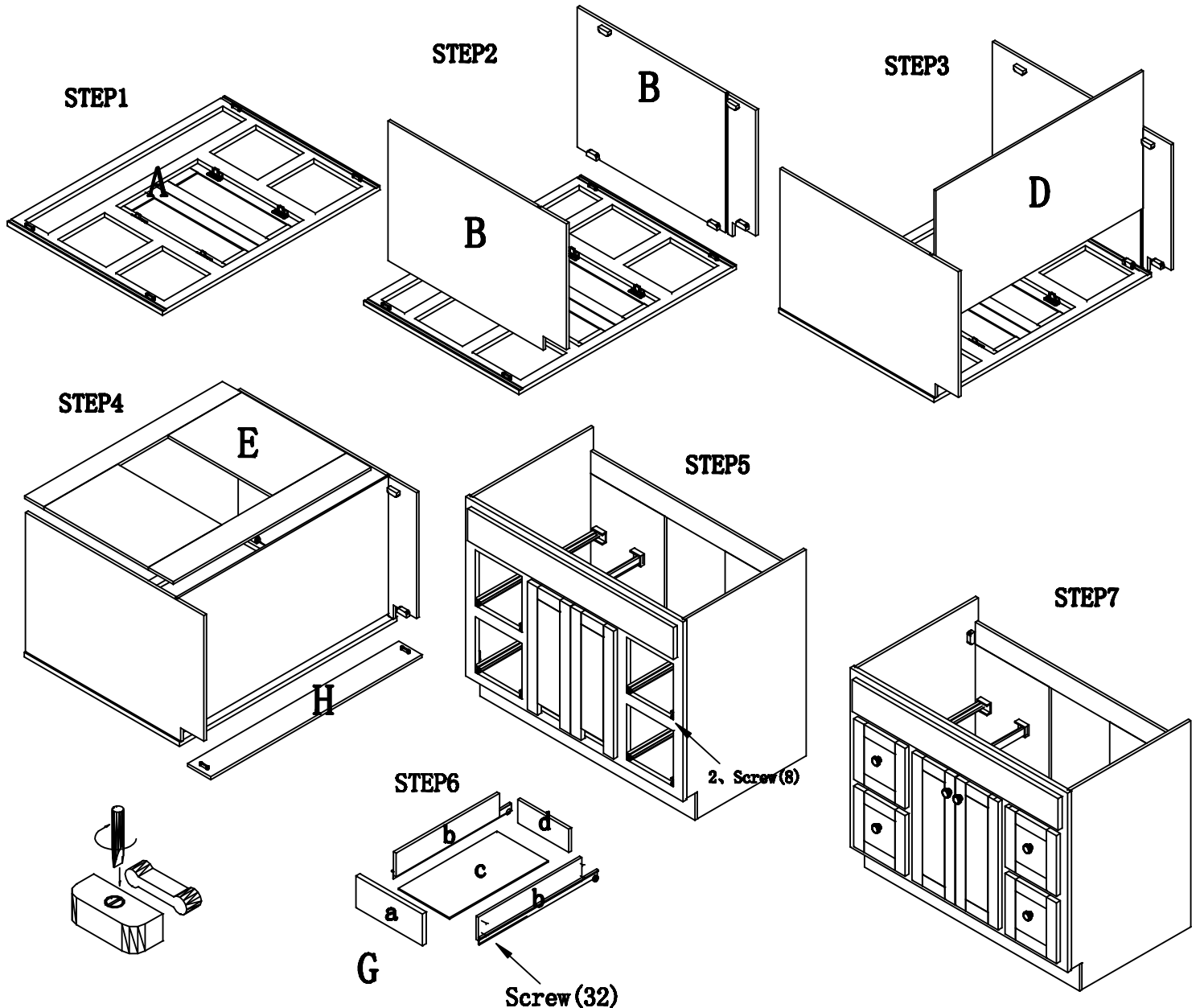
**A-Doors & Face Frame B-End Panels(2) D-Bottom Panel  
E-Back Panel H-Toe Kick G-Drawer Parts**

### Drawer PARTS LIST

**a-Front(4) b-Side(8) c-Bottom(4) d-Back(4) e-Drawer Slide(4 pr) f-Screw(Ø3\*30-32)**

### HARDWARE PARTS LIST

**1. Knob(6) 2. Screw(Ø3\*10-8)**



**Your cabinet is complete. For installation, consult a professional contractor or building supplier for the proper installation method or materials to be used for your existing wall condition (e.g., wood, concrete, tile, etc.).**